



Hamilton Marketplace

5720-5820 Nave Drive | Novato, California

NOW LEASING

| SPACE | SF | RENT | NNN |
|-------|----|------|-----|
|-------|----|------|-----|

| | | | |
|-----------------|--|--|--|
| NO AVAILABILITY | | | |
|-----------------|--|--|--|

For information, contact:

Andy Armstrong

Direct: 415-689-5357

aarmstrong@crosspointrealty.com

CA DRE #01860367

Carter Hemming

chemming@crosspointrealty.com

CA DRE #01123464

Kathy DeOchoa

kdeochoa@crosspointrealty.com

CA DRE #01871554

Phone: 415-288-6888

Fax: 415-288-6877

Crosspoint Realty Services, Inc.

20211 Patio Drive, Suite 145

Castro Valley, CA 94546

www.crosspointrealty.com





Hamilton Marketplace

5720-5820 Nave Drive | Novato, California

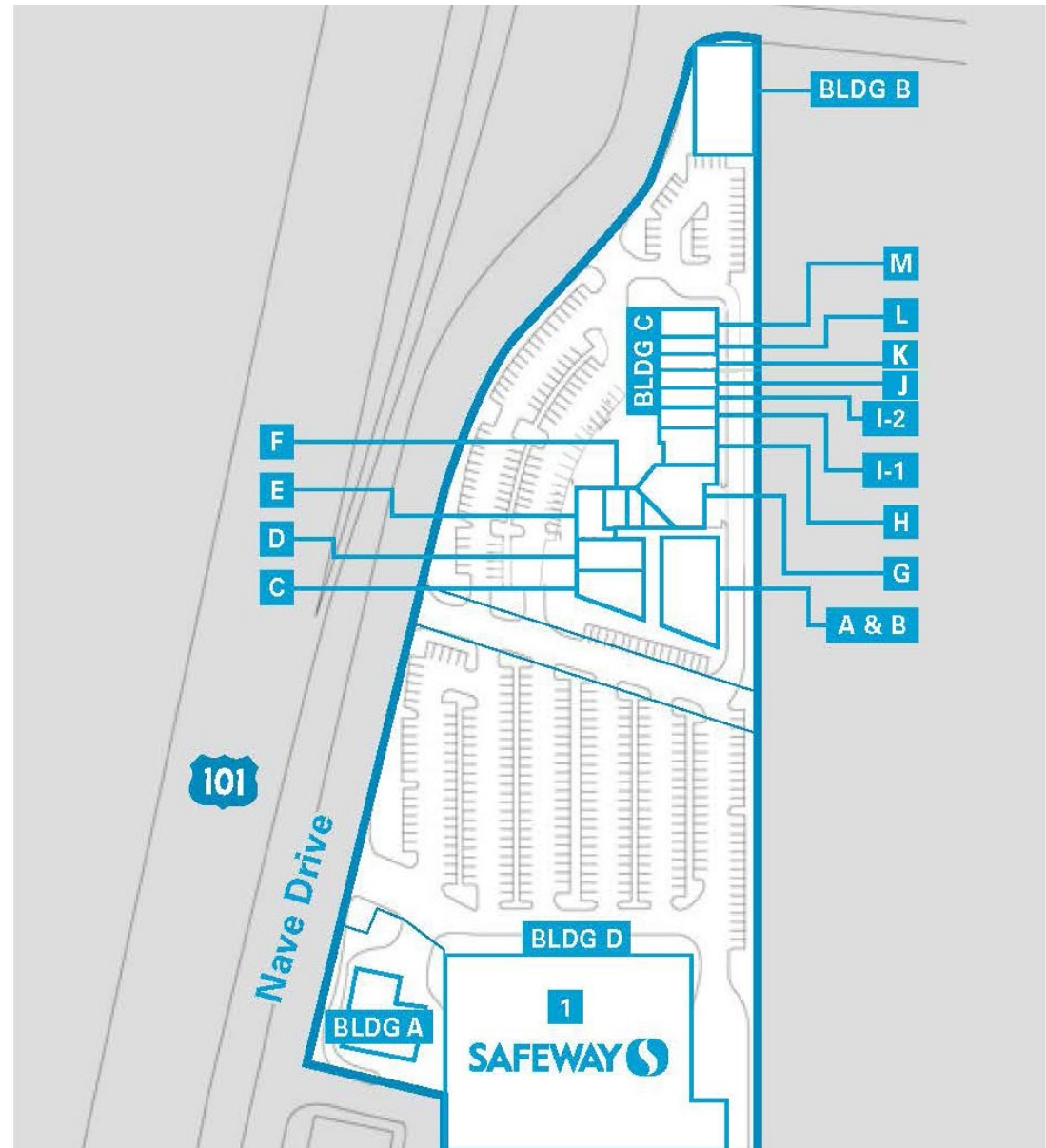
Contact: Andy Armstrong CA DRE# 01860367, aarmstrong@crosspointrealty.com; Carter Hemming CA DRE#01123464, chemming@crosspointrealty.com; Kathy DeOchoa CA DRE#01871554, kdechoa@crosspointrealty.com; Phone 415.288.6888



SITE PLAN

Contact: Andy Armstrong CA DRE# 01860367, aarmstrong@crosspointrealty.com; Carter Hemming CA DRE#01123464, chemming@crosspointrealty.com; Kathy DeOchoa CA DRE#01871554, kdechoa@crosspointrealty.com; Phone 415.288.6888

| <u>TENANT</u> | <u>SPACE</u> | <u>SF</u> |
|------------------------------|--------------|-----------|
| Safeway | 1 | 55,855 |
| Pet Food Express | A&B | 7,422 |
| Safeway Fuel Center | Bldg. A | 1 |
| Wells Fargo | Bldg. B | 4,000 |
| Super Duper | C | 2,652 |
| World Famous HOTBOYS | D | 1,603 |
| HOTBOYS (Storage) | D-1 | 147 |
| Rustic Bakery | E | 1,755 |
| Palo Alto Medical Foundation | F | 1,494 |
| Toast | G | 3,960 |
| Toast (Storage) | G-1 | 350 |
| Massage Heights | H | 2,149 |
| Teriyaki Madness | I-1 | 1,760 |
| Sourdough & Company | I-2 | 1,276 |
| X Core Pilates-Coming Soon | J | 1,761 |
| Fed Ex Office | K | 1,624 |
| Nekter | L | 1,097 |
| Peet's Coffee & Tea | M | 1,877 |
| Volta | Park | |



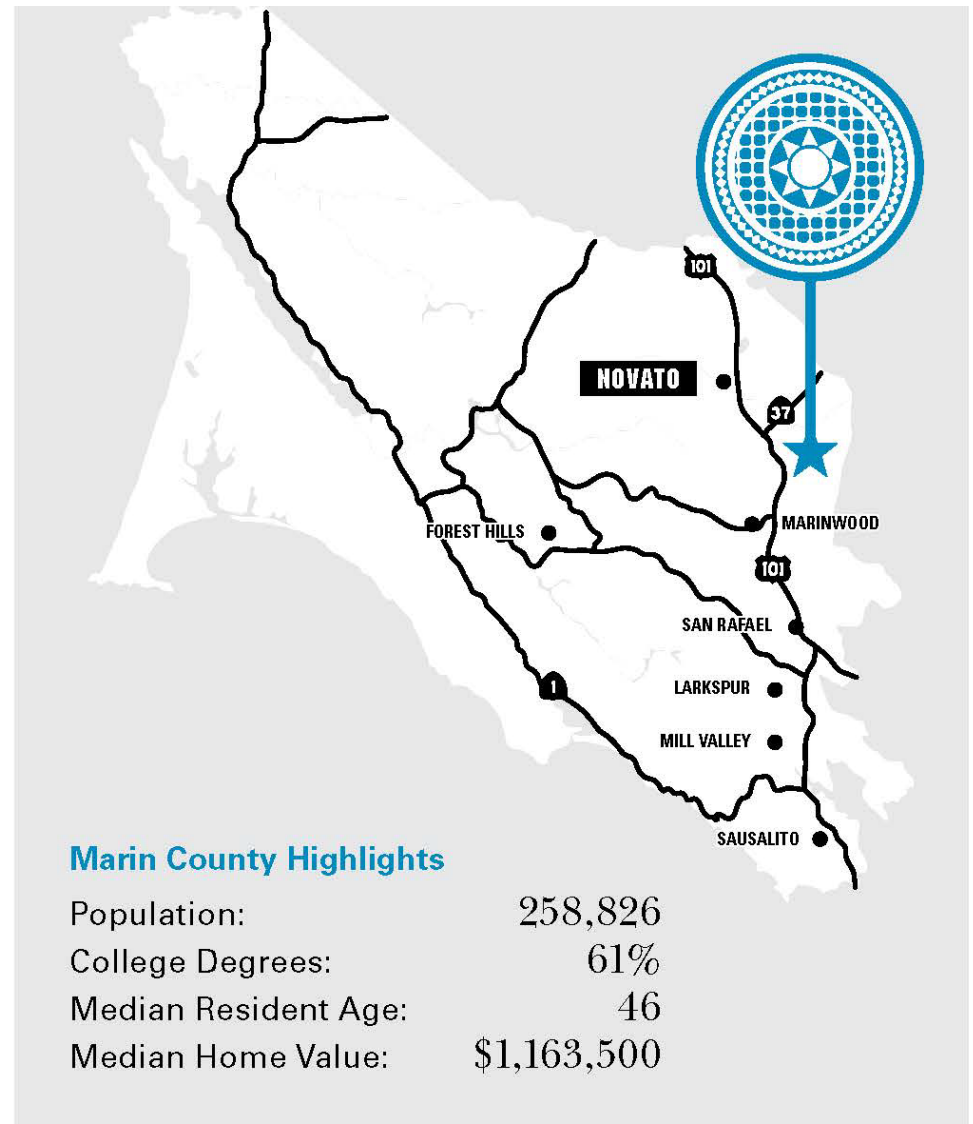
OVERVIEW

Contact: Andy Armstrong CA DRE# 01860367, aarmstrong@crosspointrealty.com; Carter Hemming CA DRE#01123464, chemming@crosspointrealty.com; Kathy DeOchoa CA DRE#01871554, kdechoa@crosspointrealty.com; Phone 415.288.6888

Marin Overview

Hamilton Marketplace is located in Marin County, the most affluent of the San Francisco Bay Area's nine counties. Beginning at the northern terminus of the Golden Gate Bridge, Marin County is bordered by Sonoma County on the North and the San Francisco Bay. Renowned for its abundant natural attractions and dramatic scenery, Marin County offers residents world-class amenities through its proximity and ease of access to major employment centers, including the primary financial center, San Francisco.

Marin County offers residents access to top-rated public schools and some of the Bay Area's most affluent suburban communities with vibrant town centers such as downtown San Anselmo, San Rafael, Mill Valley, Ross, and Larkspur. The ease of commute to San Francisco (15-20 minute drive or 35 minute ferry ride) enhances Marin County's appeal and entices executives and professionals to reside in Marin, which in turn has created one of the wealthiest counties in California.





Hamilton Marketplace

5720-5820 Nave Drive | Novato, California

OVERVIEW

For information, contact:

Andy Armstrong

Direct: 415-689-5357

aarmstrong@crosspointrealty.com

CA DRE #01860367

Carter Hemming

chemming@crosspointrealty.com

CA DRE #01123464

Kathy DeOchoa

kdeochoa@crosspointrealty.com

CA DRE #01871554

Phone: 415-288-6888

Fax: 415-288-6877

Crosspoint Realty Services, Inc.

20211 Patio Drive, Suite 145

Castro Valley, CA 94546

www.crosspointrealty.com

