



# DC Station

1901 Junipero Serra Blvd. | Daly City, California

## NOW LEASING

<u>SPACE#</u>	<u>SF</u>	<u>RENT</u>	<u>NNN</u>
E	1,344	Call	\$19.34

### For information, contact:

Emily Murtha – Senior Leasing Manager

Direct: 415-277-6905

[emurtha@crosspointrealty.com](mailto:emurtha@crosspointrealty.com)

CA DRE #01891284

Carter Hemming, CA DRE #01123464

[chemming@crosspointrealty.com](mailto:chemming@crosspointrealty.com)

Courtney Jones, CA DRE #01232209

[cjones@crosspointrealty.com](mailto:cjones@crosspointrealty.com)

Phone: 415-288-6888

Fax: 415-288-6877

Crosspoint Realty Services, Inc.

20211 Patio Drive, Suite 145

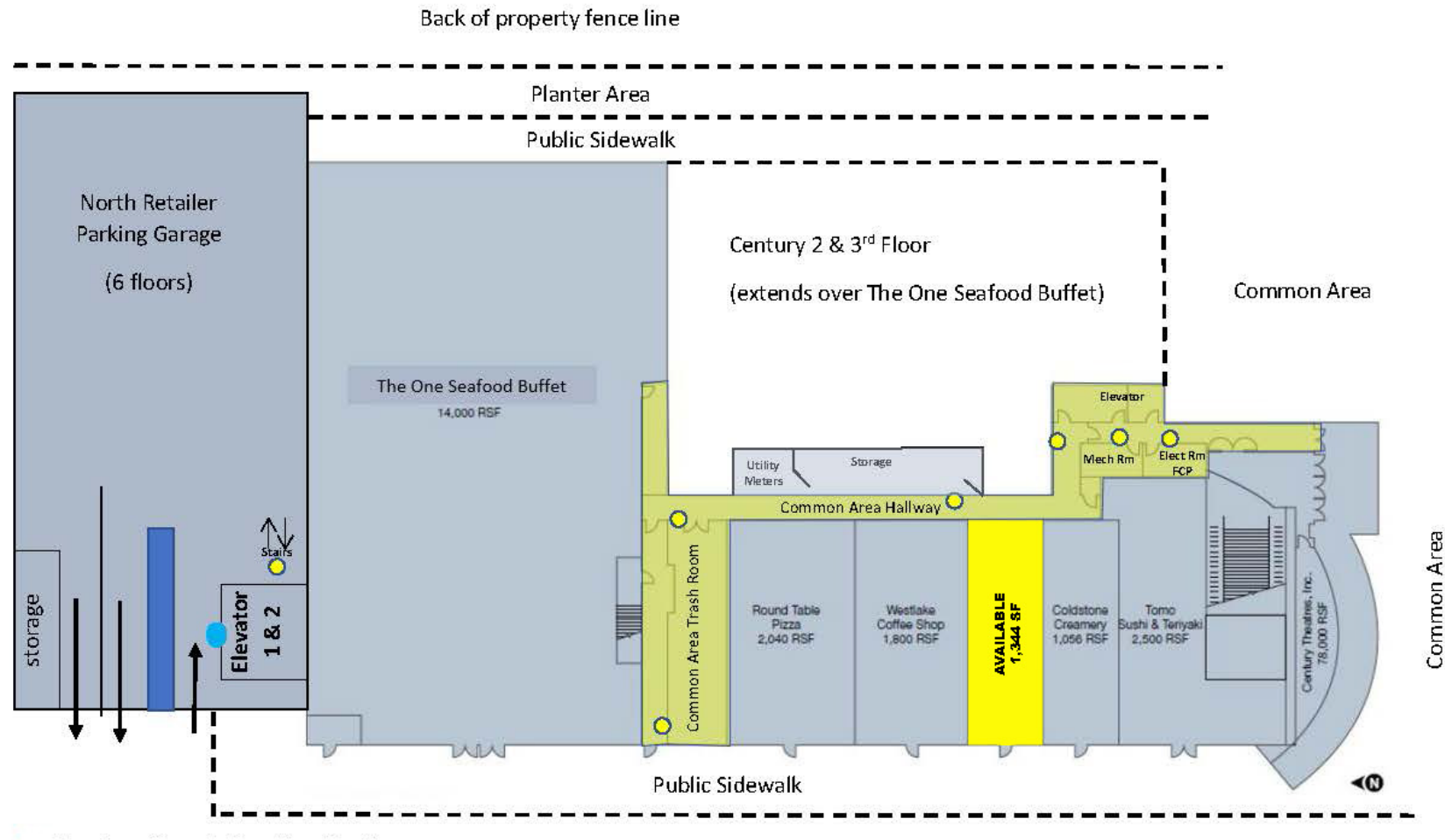
Castro Valley, CA 94546

[www.crosspointrealty.com](http://www.crosspointrealty.com)



## SITE PLAN

Contact: Emily Murtha CA DRE #01891284 [emurtha@crosspointrealty.com](mailto:emurtha@crosspointrealty.com); Carter Hemming (CA DRE#01123464), [chemming@crosspointrealty.com](mailto:chemming@crosspointrealty.com); Courtney Jones, CA DRE #01232209 [cjones@crosspointrealty.com](mailto:cjones@crosspointrealty.com) Phone 415.288.6888

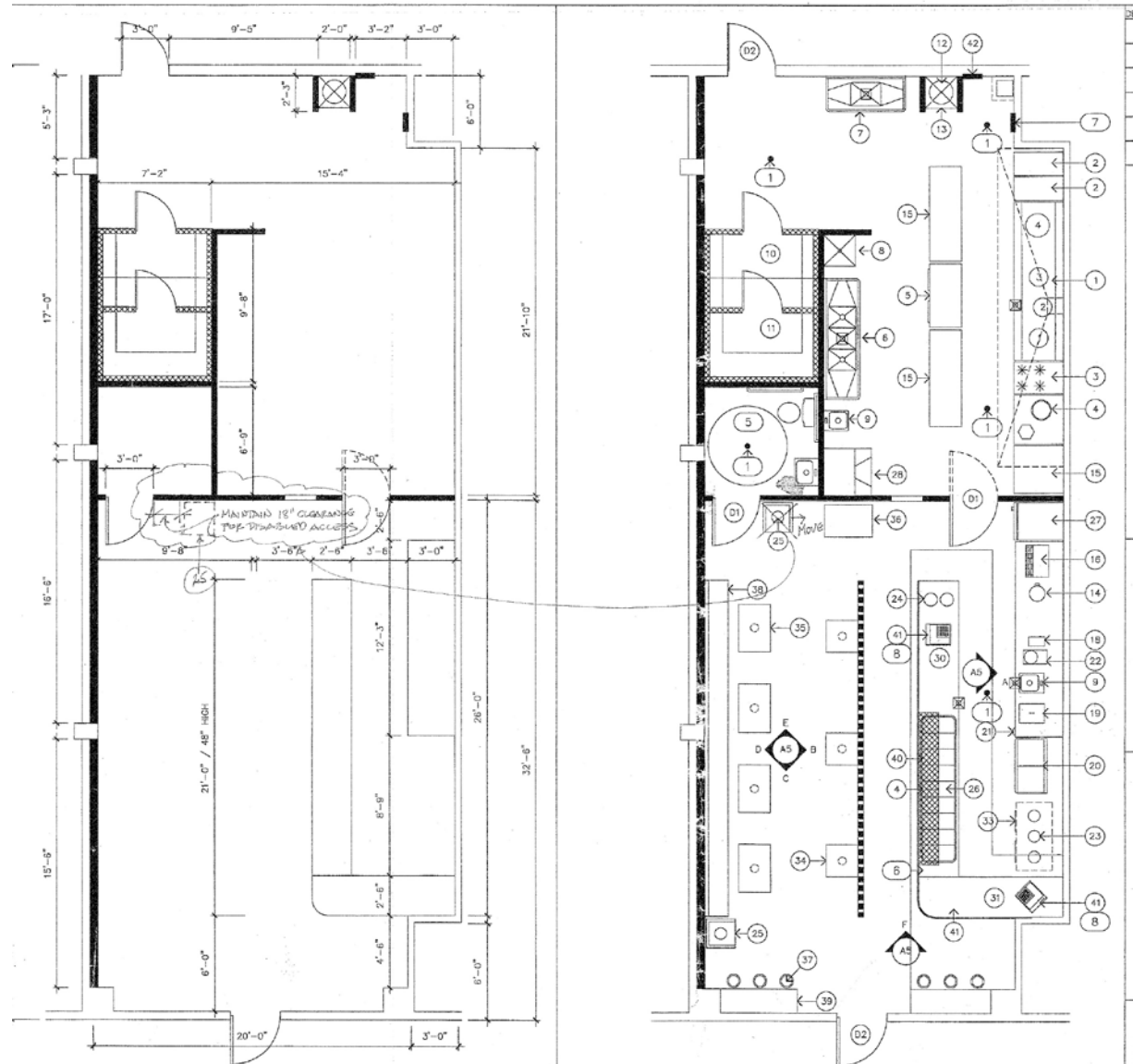


### DC Station Retail

1901 Junipero Serra Blvd, Daly City, CA 94014

## SPACE PLAN

Contact: Emily Murtha CA DRE #01891284 [emurtha@crosspointrealty.com](mailto:emurtha@crosspointrealty.com); Carter Hemming (CA DRE#01123464), [chemming@crosspointrealty.com](mailto:chemming@crosspointrealty.com); Courtney Jones, CA DRE #01232209 [cjones@crosspointrealty.com](mailto:cjones@crosspointrealty.com) Phone 415.288.6888



# DC Station

1901 Junipero Serra Blvd. | Daly City, California

## MARKET AREA

### DC Station Tenants Include:

- Century Theaters
- The One Sushi Buffet
- Tomo Sushi
- Round Table Pizza
- Westlake Coffee Shop
- Cold Stone Creamery

### For information, contact:

Emily Murtha – Senior Leasing Manager

Direct: 415-277-6905

[emurtha@crosspointrealty.com](mailto:emurtha@crosspointrealty.com)

CA DRE #01891284

Carter Hemming, CA DRE #01123464

[chemming@crosspointrealty.com](mailto:chemming@crosspointrealty.com)

Courtney Jones, CA DRE #01232209

[cjones@crosspointrealty.com](mailto:cjones@crosspointrealty.com)

Phone: 415-288-6888

Fax: 415-288-6877

Crosspoint Realty Services, Inc.

20211 Patio Drive, Suite 145

Castro Valley, CA 94546

[www.crosspointrealty.com](http://www.crosspointrealty.com)

**2001 DC STATION**

**63k** riders pass the Daly City Bart Station weekly

**2** blocks from the Daly City BART Station

**15** minute BART ride to Downtown San Francisco and the SFO Airport

**20** minute drive to Downtown San Francisco and San Mateo

**20** minute bike ride from the Mission District

**225k** vehicles pass 2001 DC Station via I-280 daily

**CENTURY THEATRES** **COLD STONE** **Round Table PIZZA** **TOMO SUSHI & RESTAURANT**

**1** Junipero Serra Blvd

**280** Lake Merced Golf Club

## MAP & INFORMATION

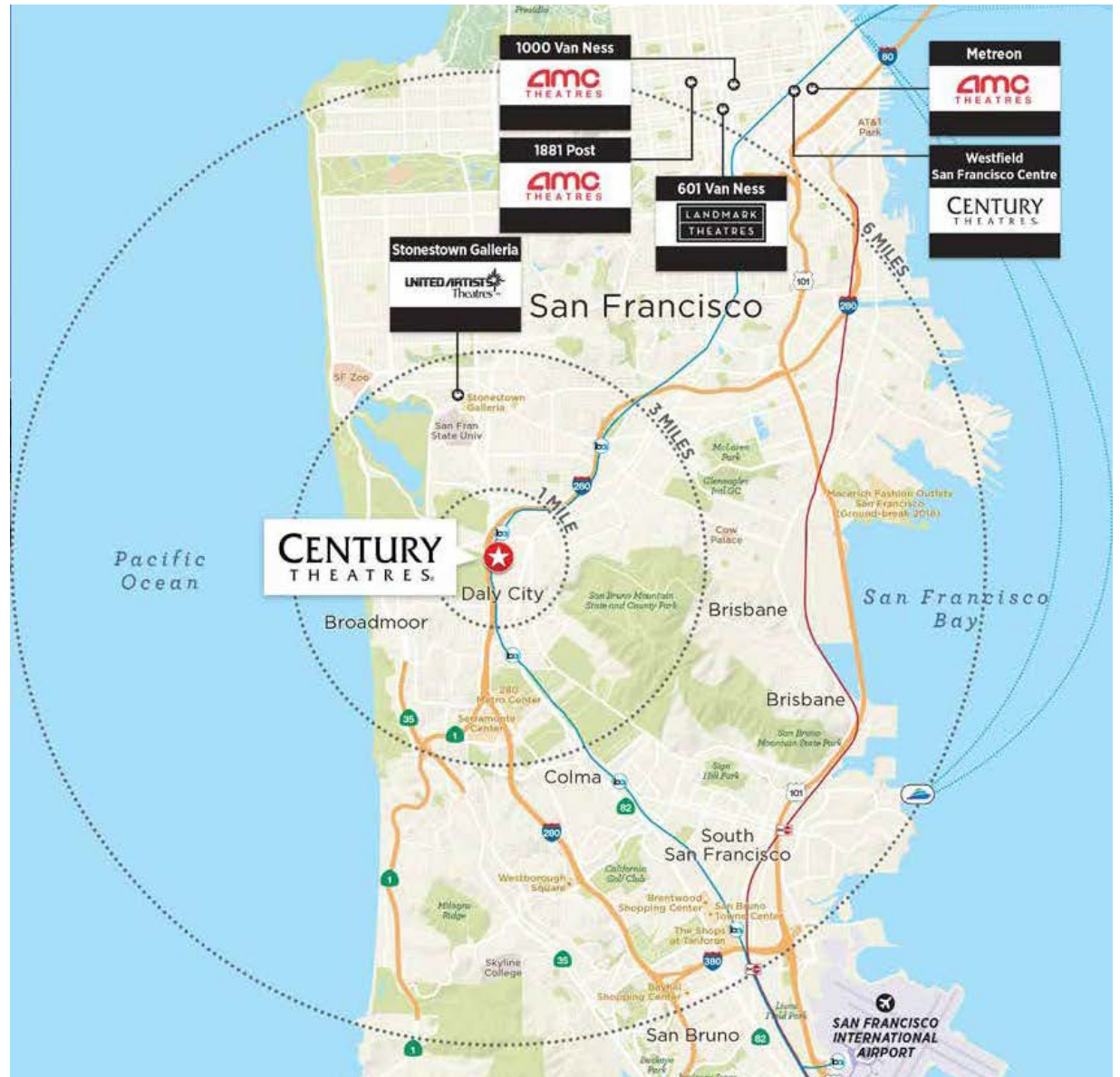
Contact: Emily Murtha CA DRE #01891284 [emurtha@crosspointrealty.com](mailto:emurtha@crosspointrealty.com); Carter Hemming (CA DRE#01123464), [chemming@crosspointrealty.com](mailto:chemming@crosspointrealty.com); Courtney Jones, CA DRE #01232209 [cjones@crosspointrealty.com](mailto:cjones@crosspointrealty.com) Phone 415.288.6888

### Description:

Located directly between San Francisco and the San Francisco Peninsula, two of the largest population centers in the Bay Area, the retail center and theater at 2001 DC Station captures additional traffic from commuters traveling via Interstate 280, BART, and direct visibility from Caltrain.

### Location:

DC Station is located at 1901 Junipero Serra Boulevard with direct visibility from the 280 corridor.



CENTURY THEATRES

