



100% LEASED!

# Crossroads at Pleasant Hill

2304-2350 MONUMENT BLVD.  
PLEASANT HILL | CA

FOR INFORMATION, CONTACT:

**EMILY MURTHA**  
Senior Leasing Manager  
Direct: 415-277-6905  
emurtha@crosspointrealty.com  
CA DRE #01891284

**CARTER HEMMING**  
chemming@crosspointrealty.com  
CA DRE #01123464

**COURTNEY JONES**  
cjones@crosspointrealty.com  
CA DRE #01232209



- Fully Leased
- Neighborhood center featuring Dick's Sporting Goods, Marshalls, Kohl's, and DSW
- Conveniently positioned right off of I-680 (239,747 ADT)

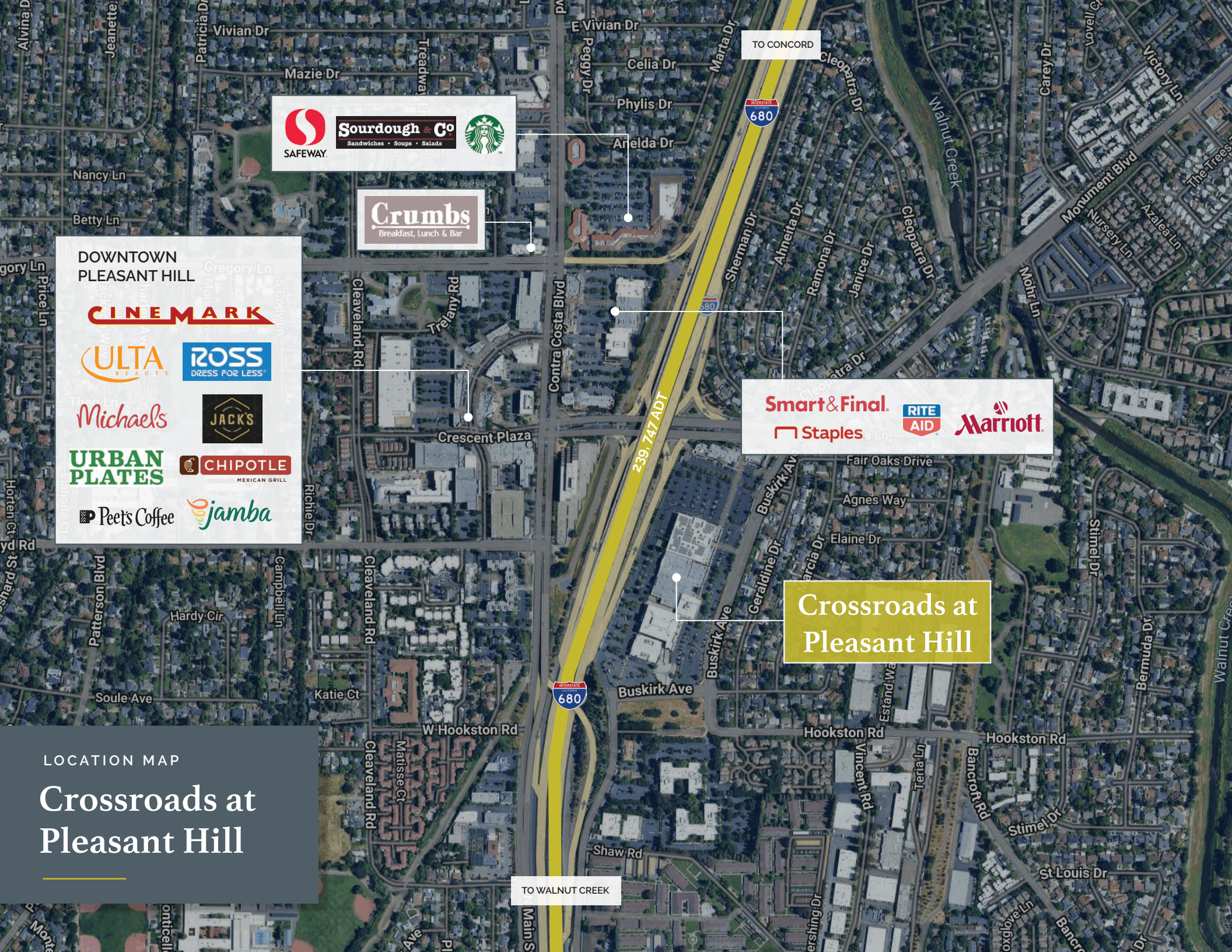


238,463 ADT



# Crossroads at Pleasant Hill

 = AVAILABLE (FULLY LEASED)



TO CONCORD

**SAFEWAY**

**Sourdough & Co**  
Sandwiches • Soups • Salads

**Starbucks**

**Crumbs**  
Breakfast, Lunch & Bar

**DOWNTOWN PLEASANT HILL**

**CINEMARK**

**ULTA BEAUTY**

**ROSS DRESS FOR LESS**

**Michaels**

**JACKS**

**URBAN PLATES**

**CHIPOTLE MEXICAN GRILL**

**Peet's Coffee**

**Jamba**

**Smart & Final**

**Staples**

**RITE AID**

**Marriott**

**Crossroads at Pleasant Hill**

LOCATION MAP

**Crossroads at Pleasant Hill**

TO WALNUT CREEK

PRINCIPAL TRADE AREA

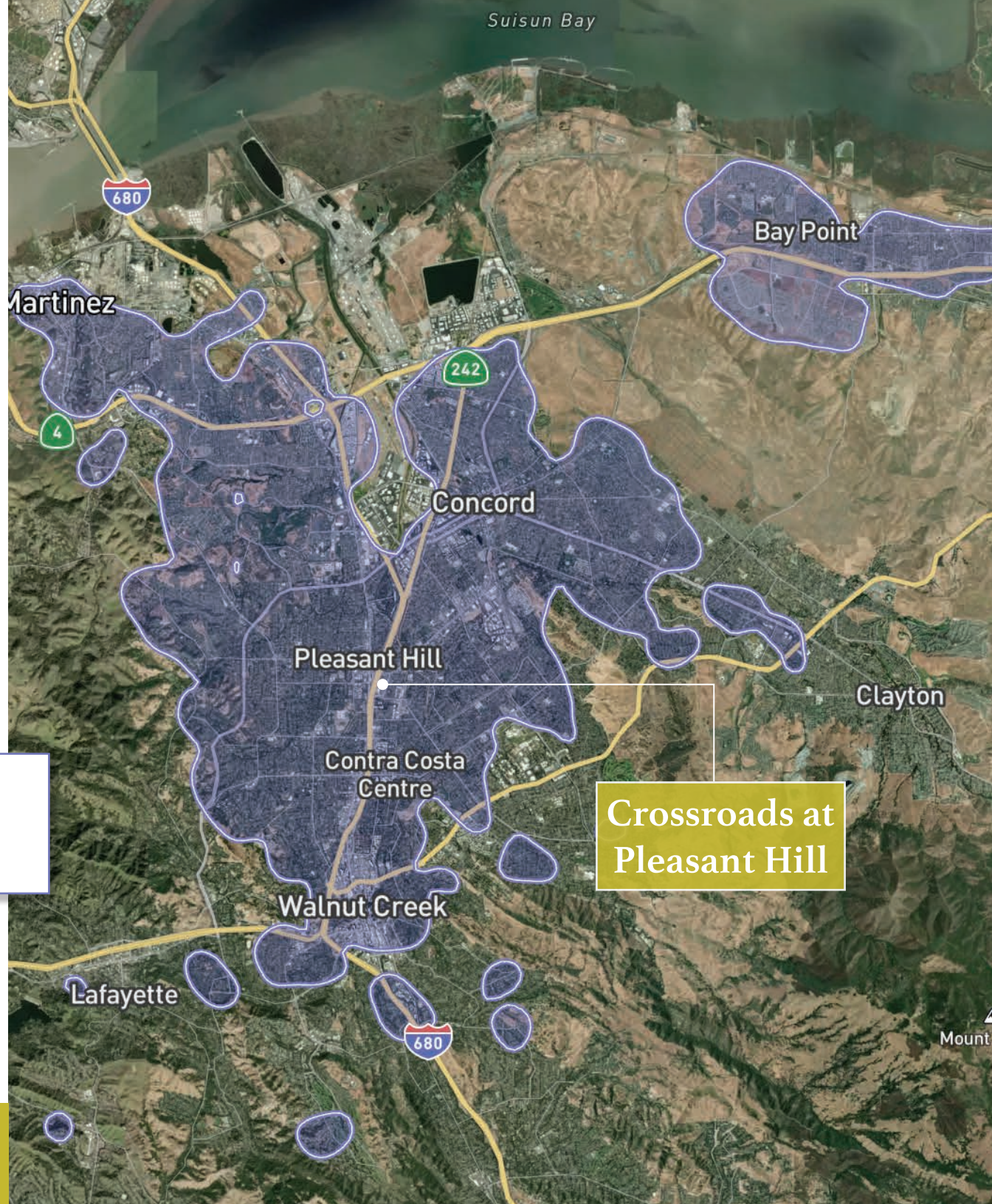
# Highlights

Crossroads at Pleasant Hill is a reliable, everyday shopping hub, where you can grab groceries, shop for clothes, eat, and run errands all in one stop. It's a 'a community-style retail center with an outdoor layout.

- Serves both locals and commuters due to its high-traffic, easy-to-access location off I-680 (239,747 ADT).

**PRINCIPAL TRADE AREA**

AVG. HH INCOME	\$141K
POPULATION (10 MILE)	301,682



**Crossroads at Pleasant Hill**



**crosspoint**  
realty services

CROSSPOINT REALTY SERVICES, INC.  
415-288-6888  
www.crosspointrealty.com

FOR INFORMATION, CONTACT:

**EMILY MURTHA**  
Senior Leasing Manager  
Direct: 415-277-6905  
emurtha@crosspointrealty.com  
CA DRE #01891284

**CARTER HEMMING**  
chemming@crosspointrealty.com  
CA DRE #01123464

**COURTNEY JONES**  
cjones@crosspointrealty.com  
CA DRE #01232209