



# Bel Aire Plaza

3614 - 4020 Bel Aire Plaza | Napa, California

## NOW LEASING

<u>SPACE#</u>	<u>SF</u>	<u>RENT</u>	<u>NNN</u>
3634	1,580	CALL	\$12.71
3790	2,487	CALL	\$12.71
3740	3,615	CALL	\$12.71

**For information, contact:**

**Andy Armstrong**

Senior Leasing Manager

Direct: 415.689.5357

[aarmstrong@crosspointrealty.com](mailto:aarmstrong@crosspointrealty.com)

CA DRE #01860367

**Carter Hemming**

[chemming@crosspointrealty.com](mailto:chemming@crosspointrealty.com)

CA DRE #01123464

**Kathy DeOchoa**

[kdechoa@crosspointrealty.com](mailto:kdechoa@crosspointrealty.com)

CA DRE #01871554

Phone: 415-288-6888

Fax: 415-288-6877

Crosspoint Realty Services, Inc.

20211 Patio Drive, Suite 145

Castro Valley, CA 94546

[www.crosspointrealty.com](http://www.crosspointrealty.com)

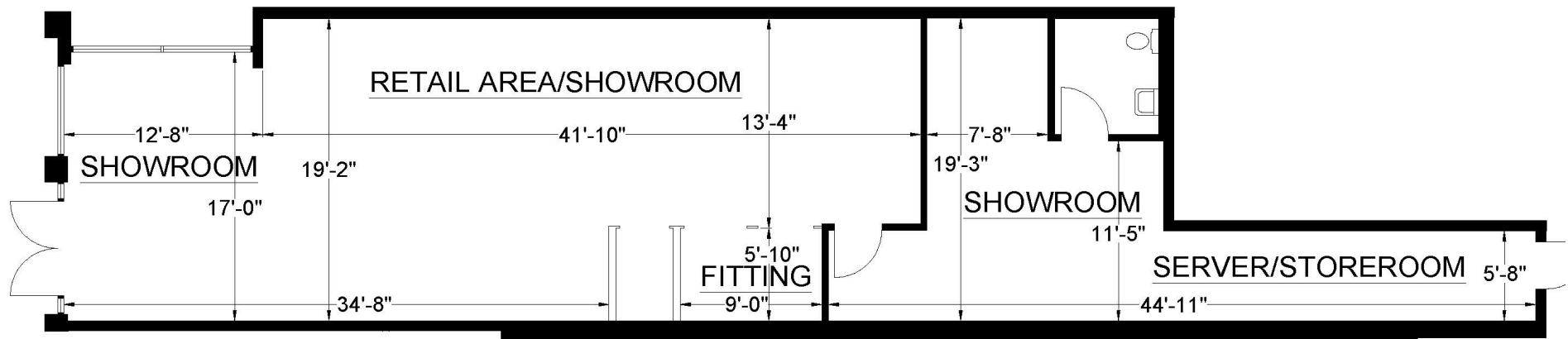


# Bel Aire Plaza

3614 - 4020 Bel Aire Plaza | Napa, California

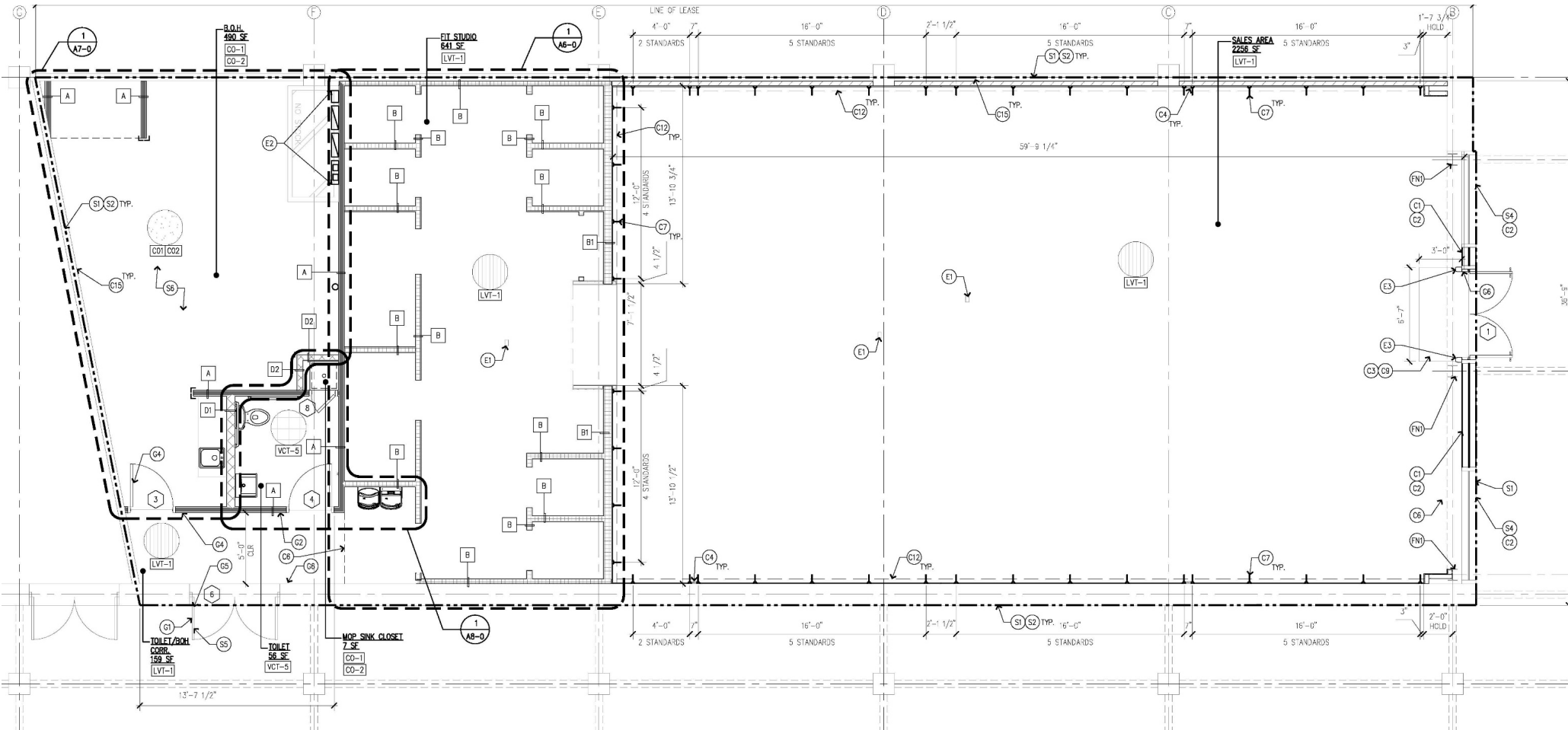
## SPACE PLAN – 3634: 1,580 SF

Contact: Andy Armstrong CA DRE# 01860367, [aarmstrong@crosspointrealty.com](mailto:aarmstrong@crosspointrealty.com); Carter Hemming CA DRE#01123464, [chemming@crosspointrealty.com](mailto:chemming@crosspointrealty.com); Kathy DeOchoa (CA DRE#01871554), [kdechoa@crosspointrealty.com](mailto:kdechoa@crosspointrealty.com) Phone 415.288.6888



## SPACE PLAN – 3790: 2,487 SF

Contact: Andy Armstrong CA DRE# 01860367, [armstrong@crosspointrealty.com](mailto:armstrong@crosspointrealty.com); Carter Hemming CA DRE#01123464, [chemming@crosspointrealty.com](mailto:chemming@crosspointrealty.com); Kathy DeOchoa (CA DRE#01871554), [kdechoa@crosspointrealty.com](mailto:kdechoa@crosspointrealty.com) Phone 415.288.6888





# Bel Aire Plaza

3614 - 4020 Bel Aire Plaza | Napa, California

SPACE PLAN – 3740: 3,615 SF

**For information, contact:**

**Andy Armstrong**

Senior Leasing Manager

Direct: 415.689.5357

[aarmstrong@crosspointrealty.com](mailto:aarmstrong@crosspointrealty.com)

CA DRE #01860367

---

**Carter Hemming**

[chemming@crosspointrealty.com](mailto:chemming@crosspointrealty.com)

CA DRE #01123464

**Kathy DeOchoa**

[kdechoa@crosspointrealty.com](mailto:kdechoa@crosspointrealty.com)

CA DRE #01871554

Phone: 415-288-6888

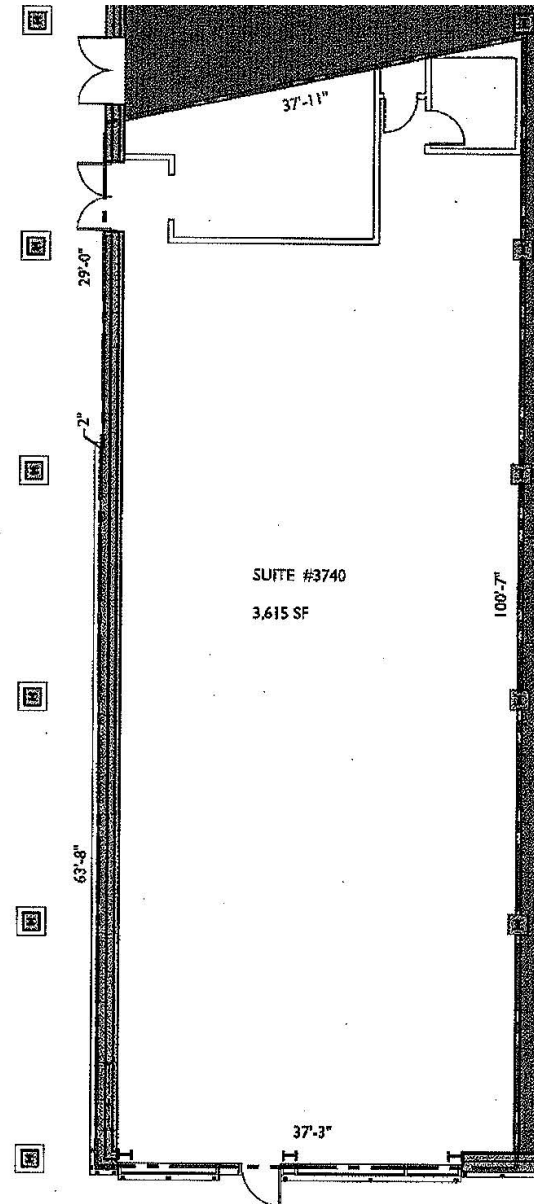
Fax: 415-288-6877

Crosspoint Realty Services, Inc.

20211 Patio Drive, Suite 145

Castro Valley, CA 94546

[www.crosspointrealty.com](http://www.crosspointrealty.com) cc



# Bel Aire Plaza

3614 - 4020 Bel Aire Plaza | Napa, California

## SITE PLAN

Contact: Andy Armstrong CA DRE# 01860367, [aarmstrong@crosspointrealty.com](mailto:aarmstrong@crosspointrealty.com); Carter Hemming CA DRE#01123464, [chemming@crosspointrealty.com](mailto:chemming@crosspointrealty.com); Kathy DeOchoa (CA DRE#01871554), [kdechoa@crosspointrealty.com](mailto:kdechoa@crosspointrealty.com) Phone 415.288.6888

SF	TENANT
455	The Barbershop of Napa
614	Napa Soap Company
614	StretchMed
920	Nekter
1,100	YoBelle
1,580	Coming Available
1,710	Peet's Coffee
1,929	Lark Shoes
1,974	Bluemercury
2,090	Super Duper Burgers
2,487	AVAILABLE
2,498	Columbia Bank
2,500	Villa Corona
2,515	Heritage Eats
3,615	Coming Available
3,680	Chico's
3,820	T-Mobile
5,220	Mancini's Sleepworld
7,766	Pet Food Express
9,750	DaVita
10,042	Barnes & Noble
12,297	Trader Joe's
18,300	World Market
33,600	OSH/Hardware
45,421	Whole Foods
86,986	Target



# Bel Aire Plaza

3614 - 4020 Bel Aire Plaza | Napa, California

## MARKET AREA & INFORMATION

Contact: Andy Armstrong CA DRE# 01860367, [armstrong@crosspointrealty.com](mailto:armstrong@crosspointrealty.com); Carter Hemming CA DRE#01123464, [chemming@crosspointrealty.com](mailto:chemming@crosspointrealty.com); Kathy DeOchoa (CA DRE#01871554), [kdechoa@crosspointrealty.com](mailto:kdechoa@crosspointrealty.com) Phone 415.288.6888

### Bel Aire Plaza Tenants Include:

Target  
Whole Foods  
Trader Joe's

Barnes & Noble  
Bluemercury  
Chico's  
Columbia Bank  
DaVita Dialysis  
Heritage Eats  
Lark Shoes  
Napa Soap Company  
Nekter

Peet's Coffee  
Cost Plus World Market  
Outdoor Supply Hardware  
The Barbershop of Napa  
Super Duper Burgers  
T-Mobile  
Villa Corona  
YoBelle  
Pet Food Express

***COMING SOON***  
StretchMed

### Location

Located off of Highway 29 at Trancas Street.  
In the heart of Napa.

