



Sac Central Shopping Center

1250 Howe Avenue | Sacramento, California

NOW LEASING

| <u>SPACE#</u> | <u>SF</u> | <u>RENT</u> | <u>NNN</u> |
|---------------|------------------------------|-------------|------------|
| 12 | 2,181 | Call | \$6.43 |
| 10 | 2,681 | Call | \$6.43 |
| 5A | 2,367 – 9,341 (Divisible) | Call | \$6.43 |
| 5B | 7,700 (Divisible) | Call | \$6.43 |

For information, contact:

Emily Murtha – Senior Leasing Manager

Direct: 415-277-6905

emurtha@crosspointrealty.com

CA DRE #01891284

Carter Hemming, CA DRE #01123464

chemming@crosspointrealty.com

Courtney Jones, CA DRE #01232209

cjones@crosspointrealty.com

Phone: 415-288-6888

Fax: 415-288-6877

Crosspoint Realty Services, Inc.

20211 Patio Drive, Suite 145

Castro Valley, CA 94546

www.crosspointrealty.com



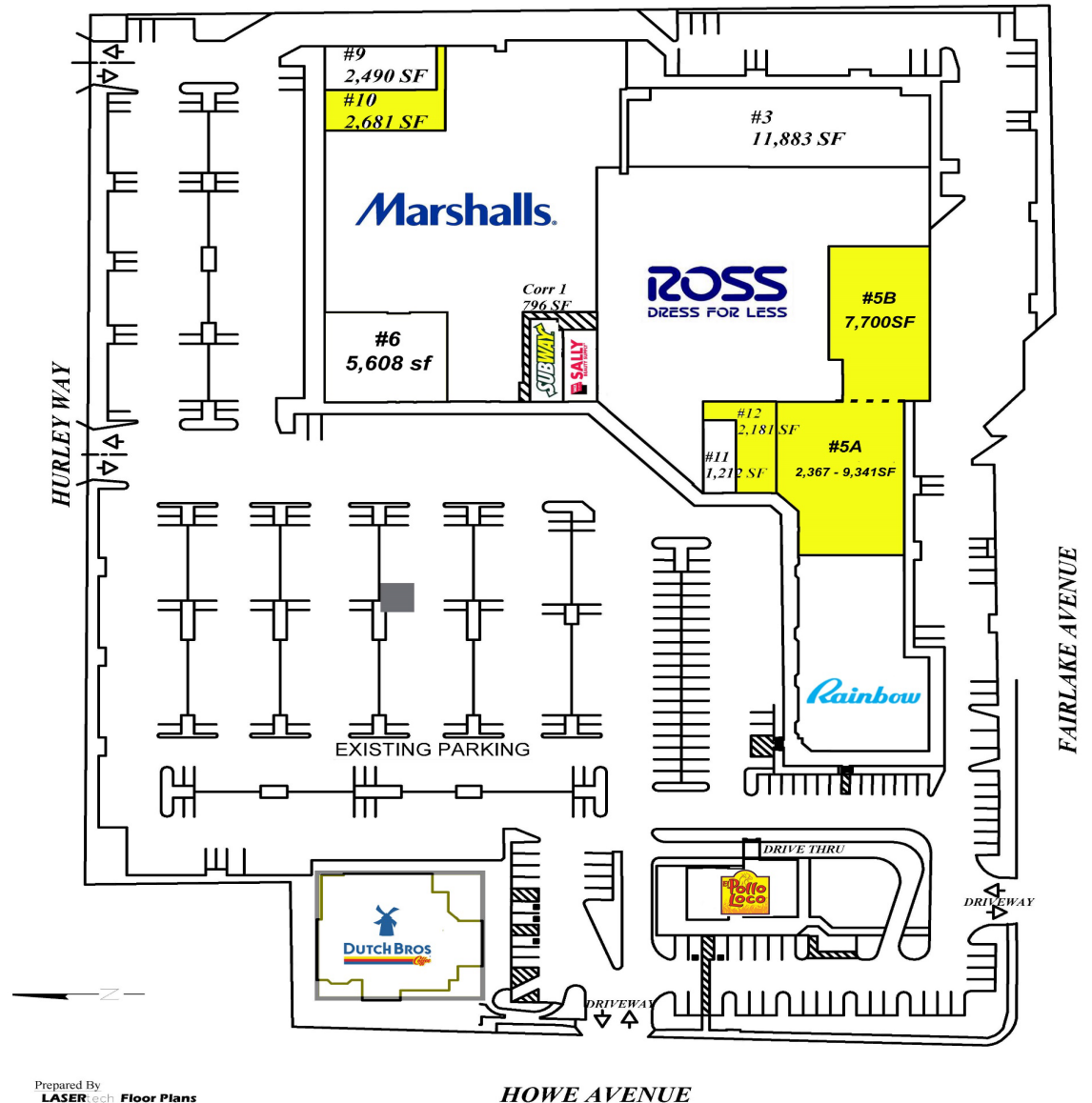
Sac Central Shopping Center

1250 Howe Avenue | Sacramento, California

SITE PLAN

Contact: Emily Murtha CA DRE #01891284 emurtha@crosspointrealty.com; Carter Hemming (CA DRE#01123464), chemming@crosspointrealty.com; Courtney Jones, CA DRE #01232209 cjones@crosspointrealty.com Phone 415.288.6888

| Space | Tenant | SF |
|-------|---------------------|---------------|
| 1 | Marhsalls | 33,768 |
| 2 | Ross | 34,721 |
| 3 | Great Escape Games | 11,883 |
| 4 | Rainbow | 1,772 |
| 5 A | Available | 2,367 – 9,341 |
| 5 B | Available | 7,700 |
| 6 | Second Life | 5,608 |
| 7 | Subway | 1,367 |
| 8 | Sally Beauty Supply | 1,367 |
| 9 | Oasis Laundry | 2,438 |
| 10 | Available | 2,681 |
| 11 | Premier Nails & Spa | 1,200 |
| 12 | Available | 2,181 |
| 13 | Dutch Bros. | 850 |
| 14 | El Pollo Loco | 2,976 |



Space Plan

Space 12
2,181 sf

For information, contact:

Emily Murtha – Senior Leasing Manager

Direct: 415-277-6905

emurtha@crosspointrealty.com

CA DRE #01891284

Carter Hemming, CA DRE #01123464

chemming@crosspointrealty.com

Courtney Jones, CA DRE #01232209

cjones@crosspointrealty.com

Phone: 415-288-6888

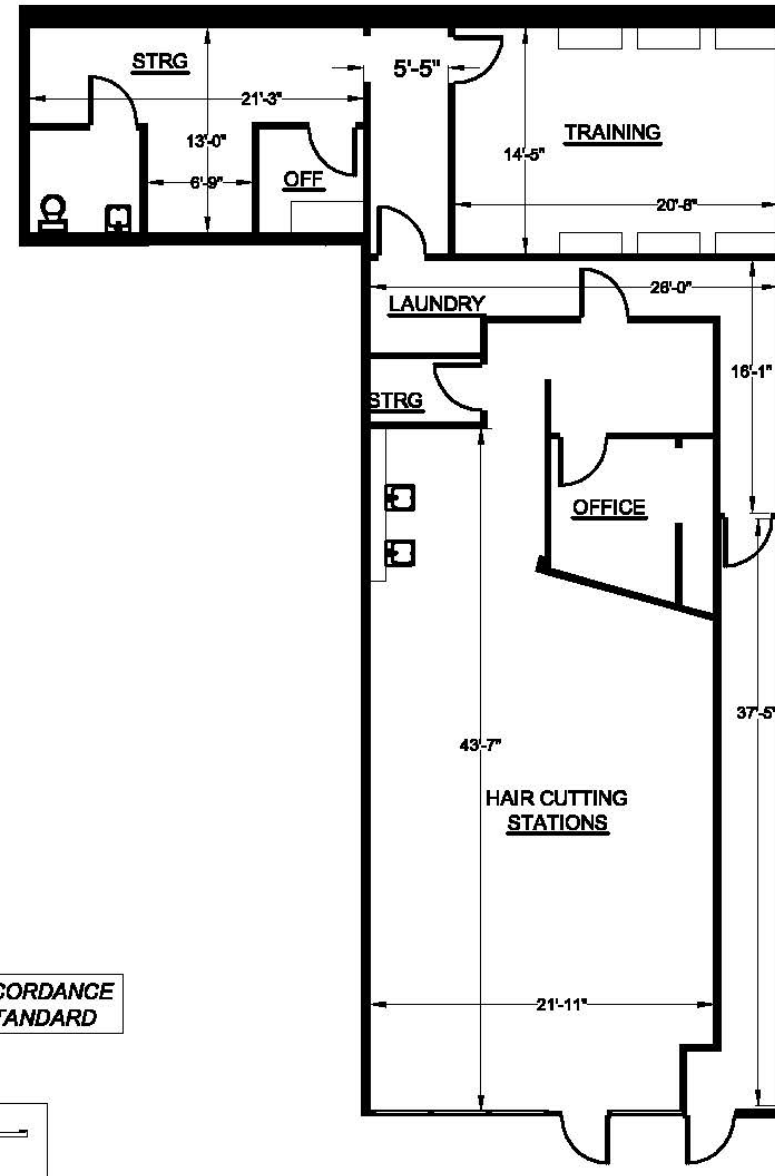
Fax: 415-288-6877

Crosspoint Realty Services, Inc.

20211 Patio Drive, Suite 145

Castro Valley, CA 94546

www.crosspointrealty.com



Space Plan

Space 5A
2,367 – 9,341sf

Space 5B
7,700 sf

For information, contact:

Emily Murtha – Senior Leasing Manager

Direct: 415-277-6905

emurtha@crosspointrealty.com

CA DRE #01891284

Carter Hemming, CA DRE #01123464

chemming@crosspointrealty.com

Courtney Jones, CA DRE #01232209

cjones@crosspointrealty.com

Phone: 415-288-6888

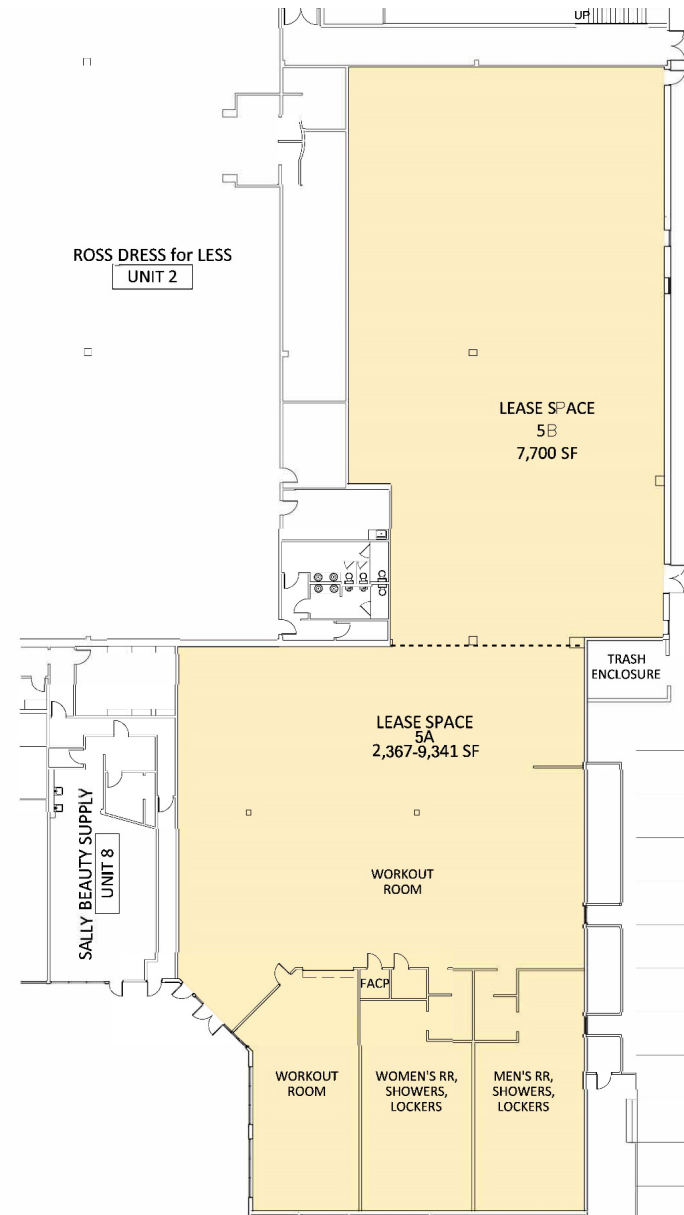
Fax: 415-288-6877

Crosspoint Realty Services, Inc.

20211 Patio Drive, Suite 145

Castro Valley, CA 94546

www.crosspointrealty.com

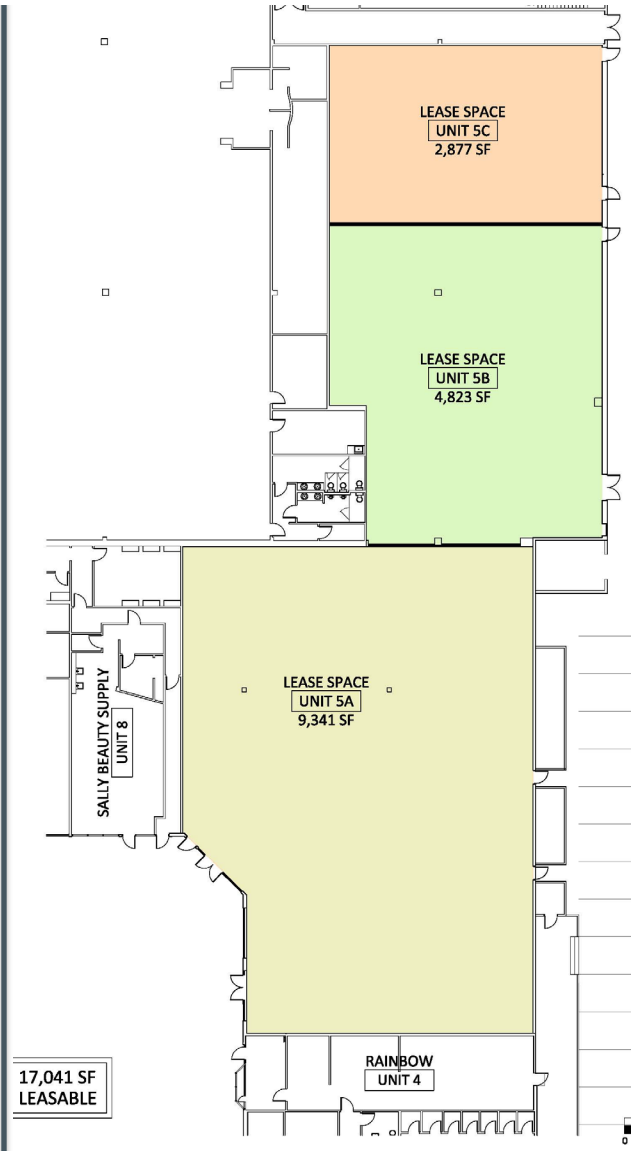
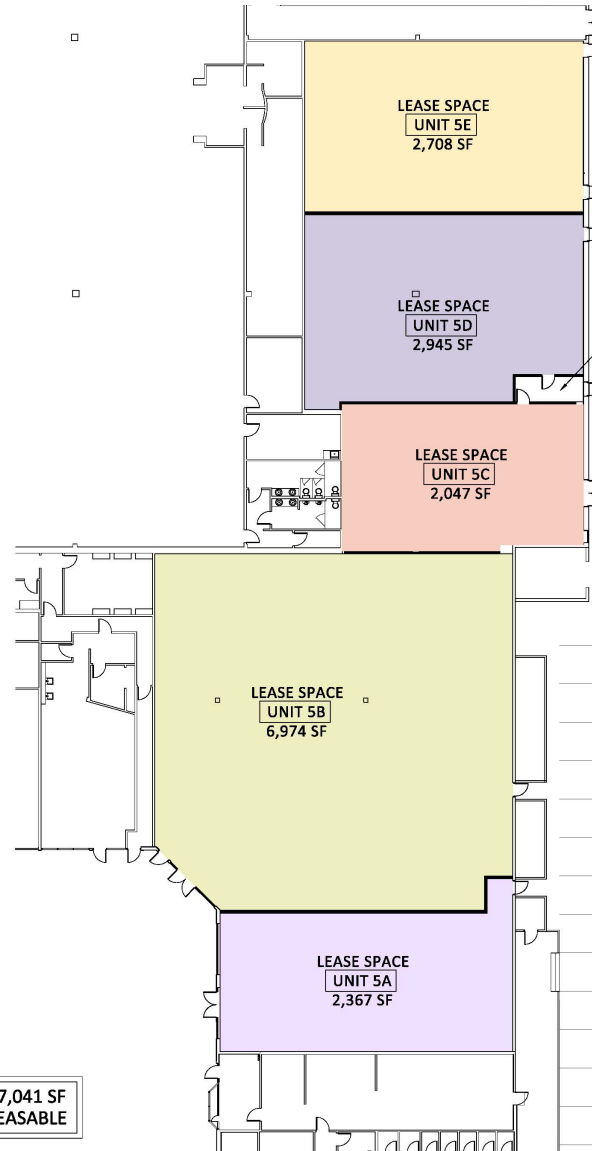
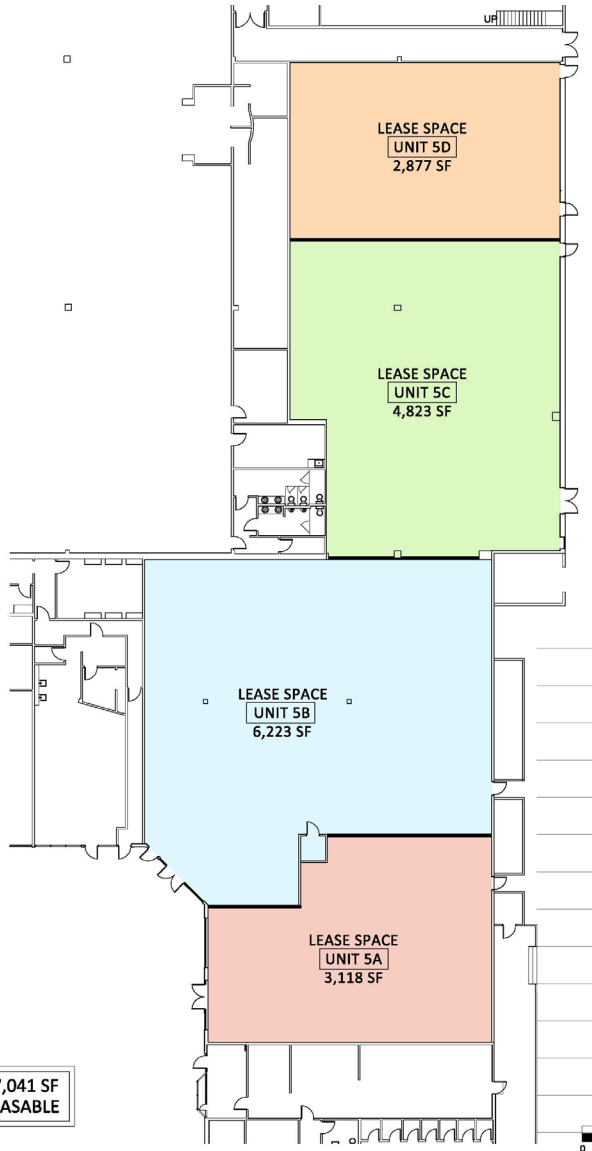


Sac Central Shopping Center

1250 Howe Avenue | Sacramento, California

Space 5 – Demising Options

Contact: Emily Murtha CA DRE #01891284 emurtha@crosspointrealty.com; Carter Hemming (CA DRE#01123464), chemming@crosspointrealty.com; Courtney Jones, CA DRE #01232209 cjones@crosspointrealty.com Phone 415.288.6888



Sac Central Shopping Center

1250 Howe Avenue | Sacramento, California

MARKET AREA

Sac Central Tenants Include:

- Ross
- Marshall's
- Rainbow
- Sally Beauty
- Oasis Laundry
- Premier Nails & Spa
- Second Life
- El Pollo Loco
- Great Escape Games
- Subway
- Dutch Bros. Coffee

For information, contact:

Emily Murtha – Senior Leasing Manager

Direct: 415-277-6905

emurtha@crosspointrealty.com

CA DRE #01891284

Carter Hemming, CA DRE #01123464

chemming@crosspointrealty.com

Courtney Jones, CA DRE #01232209

cjones@crosspointrealty.com

Phone: 415-288-6888

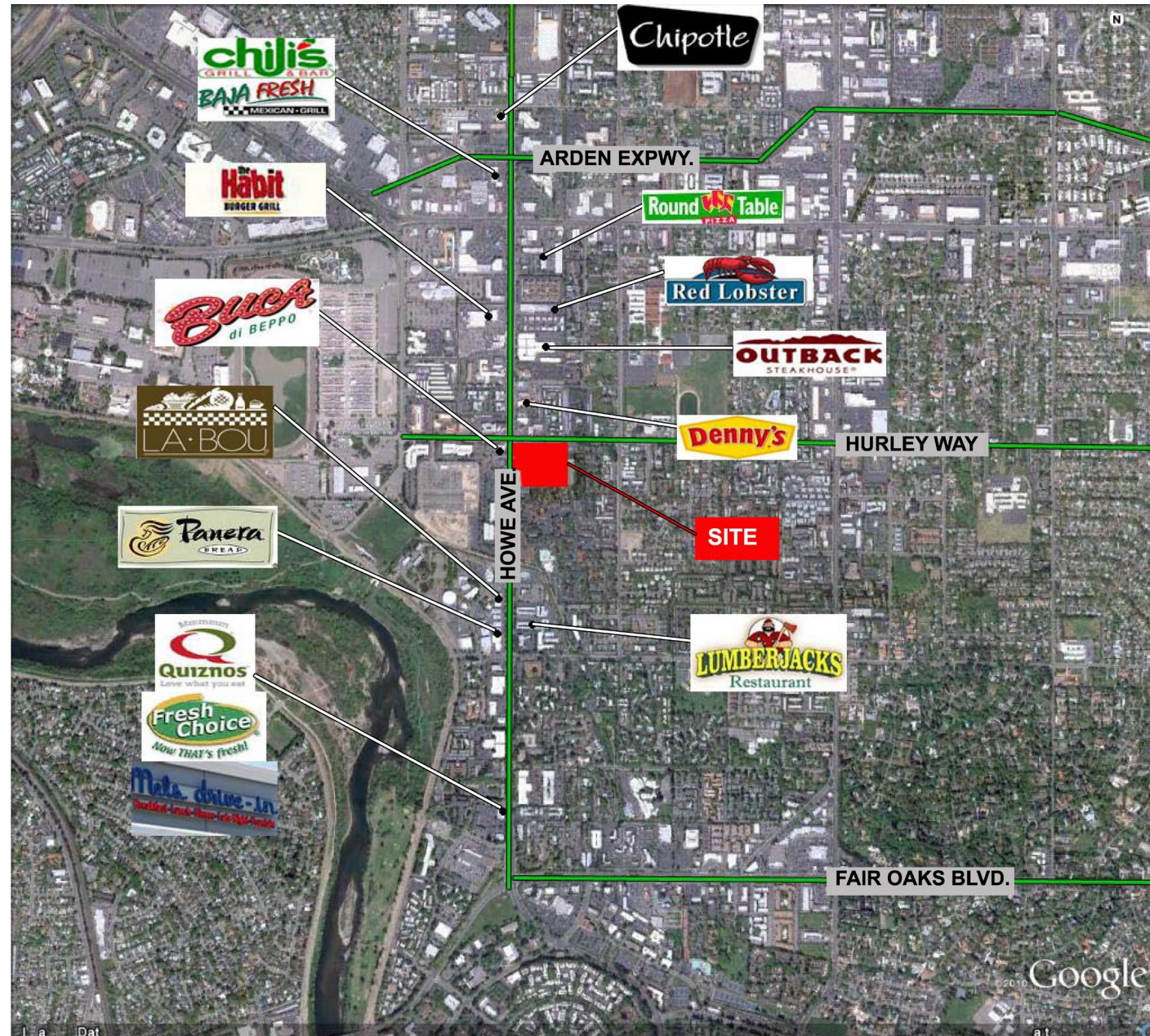
Fax: 415-288-6877

Crosspoint Realty Services, Inc.

20211 Patio Drive, Suite 145

Castro Valley, CA 94546

www.crosspointrealty.com



Sac Central Shopping Center

1250 Howe Avenue | Sacramento, California

MAP & INFORMATION

Description:

Sac Central is a 142,000 square foot community center located in the Arden retail area and generally considered the shopping destination of choice for value soft goods in central Sacramento.

Location:

1250 Howe Avenue, Sacramento, CA 95825
(corner Hurley Way) in the dynamic Arden retail corridor.

For information, contact:

Emily Murtha – Senior Leasing Manager

Direct: 415-277-6905

emurtha@crosspointrealty.com

CA DRE #01891284

Carter Hemming, CA DRE #01123464

chemming@crosspointrealty.com

Courtney Jones, CA DRE #01232209

cjones@crosspointrealty.com

Phone: 415-288-6888

Fax: 415-288-6877

Crosspoint Realty Services, Inc.

20211 Patio Drive, Suite 145

Castro Valley, CA 94546

www.crosspointrealty.com

