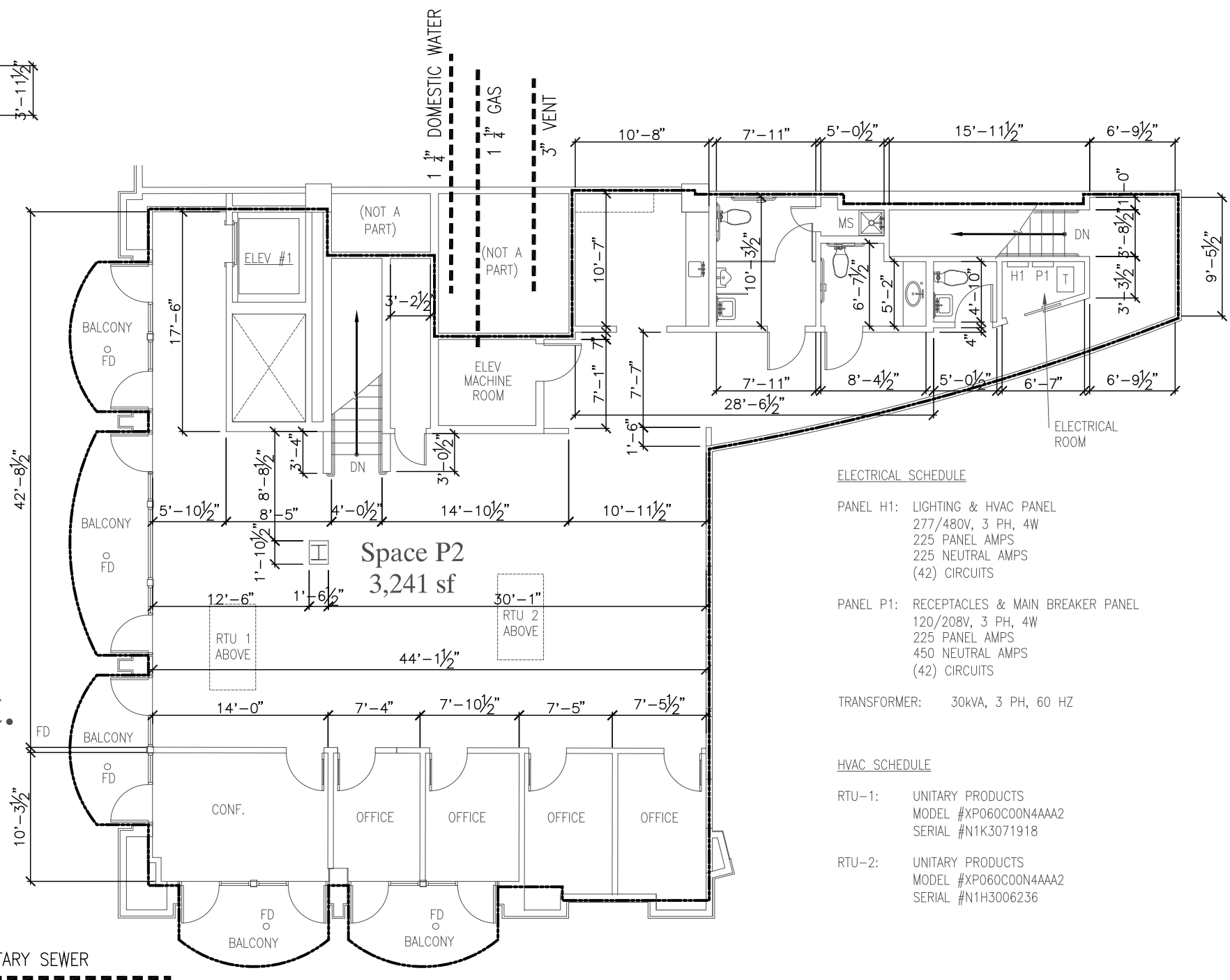
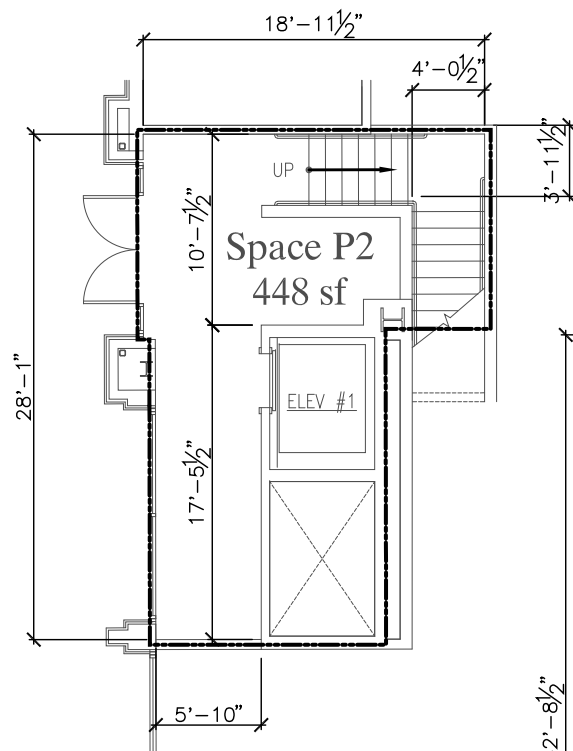


Space P2
448 sf

Space P2
3,689 sf
2125 Broadway St.



ELECTRICAL SCHEDULE

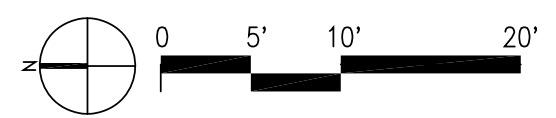
- PANEL H1: LIGHTING & HVAC PANEL
277/480V, 3 PH, 4W
225 PANEL AMPS
225 NEUTRAL AMPS
(42) CIRCUITS
- PANEL P1: RECEPTACLES & MAIN BREAKER PANEL
120/208V, 3 PH, 4W
225 PANEL AMPS
450 NEUTRAL AMPS
(42) CIRCUITS
- TRANSFORMER: 30kVA, 3 PH, 60 HZ

HVAC SCHEDULE

- RTU-1: UNITARY PRODUCTS
MODEL #XP060C00N4AAA2
SERIAL #N1K3071918
- RTU-2: UNITARY PRODUCTS
MODEL #XP060C00N4AAA2
SERIAL #N1H3006236

FOR LEASING INFORMATION:
Tom Klein & Courtney Jones
Crosspoint Realty Services, Inc.
260 California Street
San Francisco, CA 94111
www.crosspointrealty.com
P: 415.288.6888 F: 415.288.6877

ON BROADWAY **SPACE P2 - LEASE PLAN**
REDWOOD CITY, CA November 18, 2020



DISCLAIMER:
THIS SITE PLAN IS INTENDED ONLY TO SHOW THE GENERAL LAYOUT OF THE PROPERTY OR A PART THEREOF. LANDLORD RESERVES THE RIGHT TO ALTER, VARY, ADD OR OMIT IN WHOLE OR IN PART ANY STRUCTURES, AND/OR IMPROVEMENTS, TENANT NAMES, STORE SIZES AND/OR LAND AREA SHOWN ON THIS PLAN. ALL MEASUREMENTS AND DISTANCES ARE APPROXIMATE. THIS PLAN IS NOT TO BE SCALED.