



# Marina Square

1201 – 1299 Marina Blvd | San Leandro, California

## NOW LEASING

<u>SPACE#</u>	<u>SF</u>	<u>RENT</u>	<u>NNN</u>
Current Talbots Available Q1 2021	4,000	\$42	\$14



For information, contact:

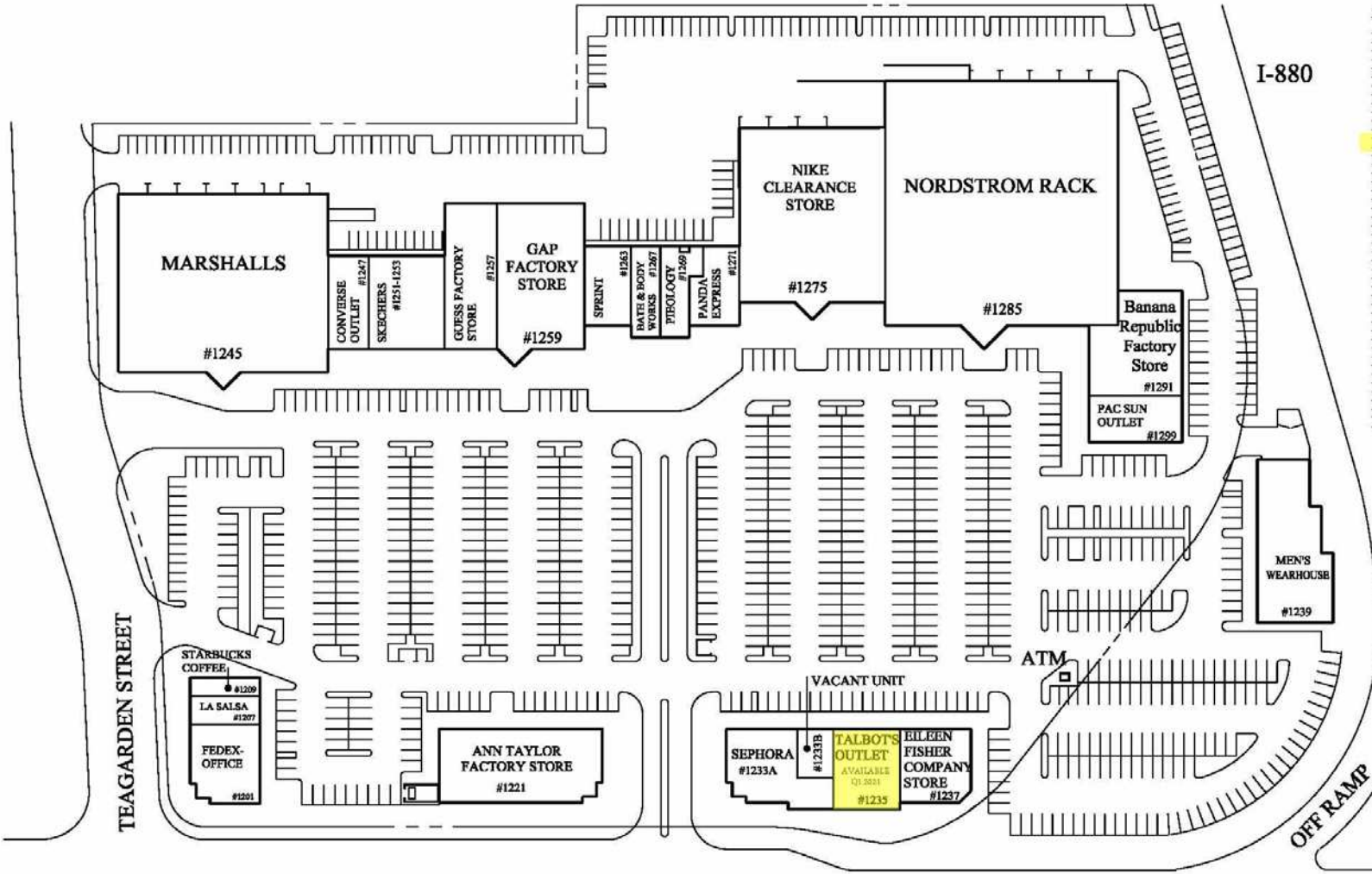
**Thomas N. Klein**, CA BRE #00840486  
[tklein@crosspointrealty.com](mailto:tklein@crosspointrealty.com)

Phone: 415-288-6888  
Fax: 415-288-6877

Crosspoint Realty Services, Inc.  
303 Sacramento Street, 3<sup>rd</sup> Floor  
San Francisco, CA 94111  
[www.crosspointrealty.com](http://www.crosspointrealty.com)

## SITE PLAN

Contact: Thomas N. Klein (CA BRE#00840486), [tklein@crosspointrealty.com](mailto:tklein@crosspointrealty.com) Phone 415.288.6888



## LEASING SUMMARY

1201	- FEDEX OFFICE	3,740 sf
1207	- LA SALSA HOLDING CO.	1,349 sf
1209	- STARBUCKS COFFEE	1,170 sf
1221	- ANN TAYLOR FACTORY STORE	9,295 sf
1233A	- SEPHORA	4,418 sf
1233B	- VACANT UNIT	1,344 sf
1235	- TALBOT'S OUTLET	4,000 sf
1237	- EILEEN FISHER COMPANY STORE	3,990 sf
1239	- MEN'S WEARHOUSE	7,820 sf
1245	- MARSHALLS	27,500 sf
1247	- CONVERSE OUTLET	3,000 sf
1251,3	- SKECHERS	5,000 sf
1257	- GUESS FACTORY STORE	5,000 sf
1259	- GAP FACTORY STORE	10,000 sf
1263	- SPRINT	2,509 sf
1267	- BATH & BODY WORKS	1,900 sf
1269	- PIBOLOGY	2,172 sf
1271	- PANDA EXPRESS	2,460 sf
1275	- NIKE CLEARANCE STORE	18,937 sf
1285	- NORDSTROM RACK	42,000 sf
1291	- BANANA REPUBLIC	6,610 sf
1299	- PAC SUN OUTLET	3,040 sf
KIOSK	- BANK OF AMERICA	ATM

TOTAL 167,254 SQ.FT.

TOTAL PARKING SPACES = 926

PARKING RATIO = 5.54 PARKING SPACES/1,000 SF

Deutsche Asset & Wealth Management

**crosspoint**  
realty services

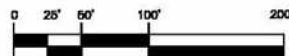
## MARINA SQUARE

SHOPPING CENTER 1/02/20

San Leandro, California



REFERENCE NORTH



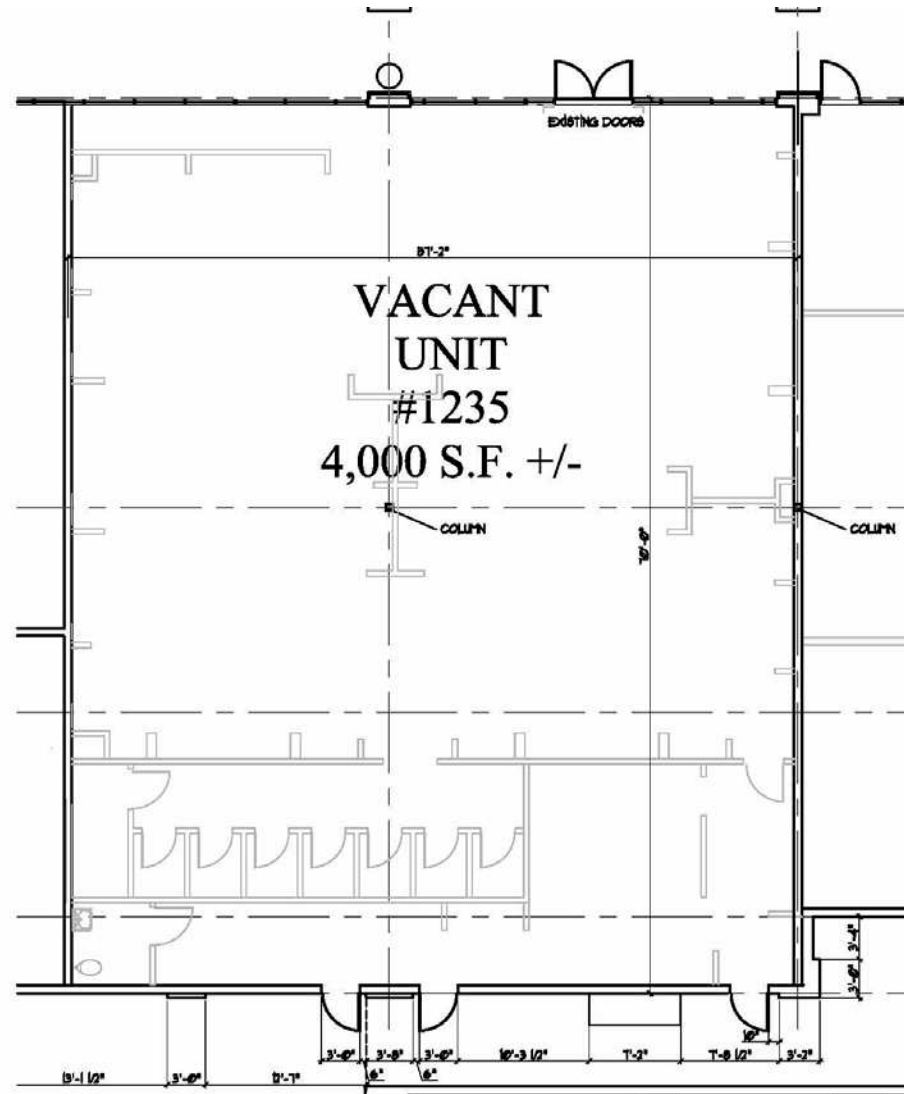
MARINA BLVD.

**JOHNSON LYMAN ARCHITECTS**  
1375 LOCUST ST #202, WALNUT CREEK, CA 94596  
925.930.9690

This site plan is intended only to show the general layout of the property or a part thereof. Landlord reserves the right to alter, vary, add to or omit in whole or in part any structures, and/or improvements, and/or common areas and/or land area shown on this plan. All measurements and distances are approximate. This plan is not to be scaled.

LOD

Contact: Thomas N. Klein (CA BRE#00840486), [tklein@crosspointrealty.com](mailto:tklein@crosspointrealty.com) Phone 415.288.6888





## MARKET AREA

### Marina Square Tenants Include:

- |                          |                               |
|--------------------------|-------------------------------|
| Nordstrom Rack           | Skechers                      |
| Ann Taylor Factory Store | Sephora                       |
| Talbots Outlet           | Guess Outlet                  |
| Marshall's               | Sprint PCS                    |
| GAP Outlet               | Bath & Body Works             |
| Eileen Fisher Outlet     | Converse                      |
| Men's Wearhouse          | Pac Sun                       |
| La Salsa                 | Banana Republic Factory Store |
| Starbucks                | FedEx Kinkos                  |
| Nike Clearance Store     | Pieology                      |
|                          | Panda Express                 |



### For information, contact:

**Thomas N. Klein**, CA BRE #00840486  
[tklein@crosspointrealty.com](mailto:tklein@crosspointrealty.com)

Phone: 415-288-6888  
Fax: 415-288-6877

Crosspoint Realty Services, Inc.  
303 Sacramento Street, 3<sup>rd</sup> Floor  
San Francisco, CA 94111  
[www.crosspointrealty.com](http://www.crosspointrealty.com)